

**Available for
SUBLEASE**

Riverplace
550 South Main St.



\$19.75 PSF (Full Service)

**Available 4,200 up to 8,552
SF of professional office
space located on 5th floor**

- Over 6 years of term available
- Class A mixed use building in Downtown/Westend
- Numerous amenities including in building Starbucks, fine dining, etc.
- Attached City Parking Garage

For more information and inspection please contact:

MARCUS M. CORNELIUS

Senior Vice President
Direct (864) 370-8192
mcornelius@coppedgetison.com

TODD E. YOUNGHANS, SIOR

Executive Vice President
Direct (864) 370-8190
tyoungkans@coppedgetison.com

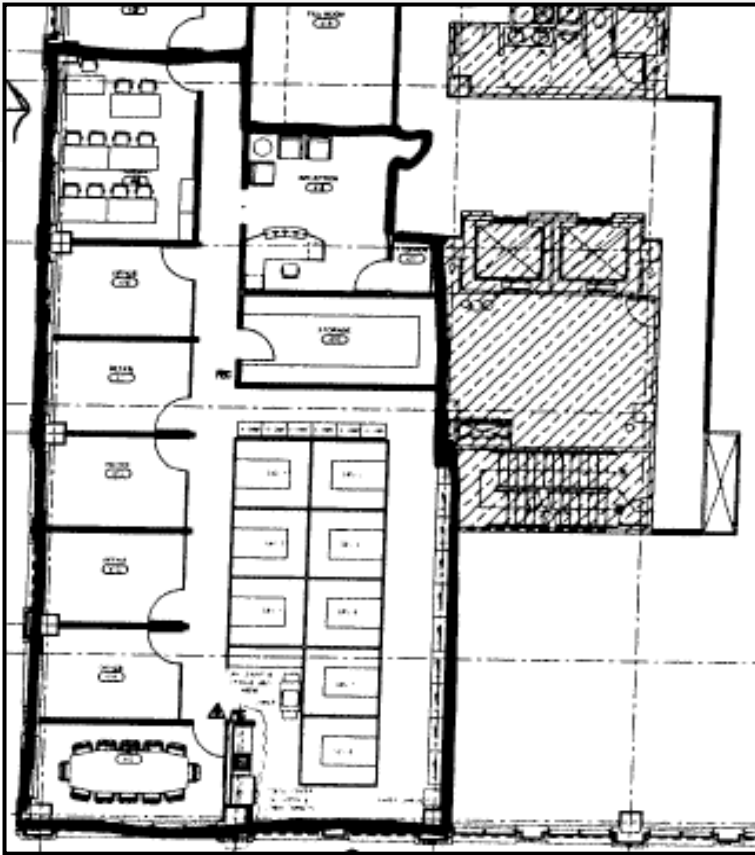
No warranty or representation, express or implied, is made as to the accuracy of the information contained herein, and same is submitted subject to errors omissions, change of price, rental or other conditions, withdrawal without notice, and to any specific listing conditions, imposed by our principals.

 **COPPEDGE & TISON**
Commercial Real Estate

An independently owned and
operated member of the
 **CUSHMAN &
WAKEFIELD**
ALLIANCE

Available for
SUBLEASE

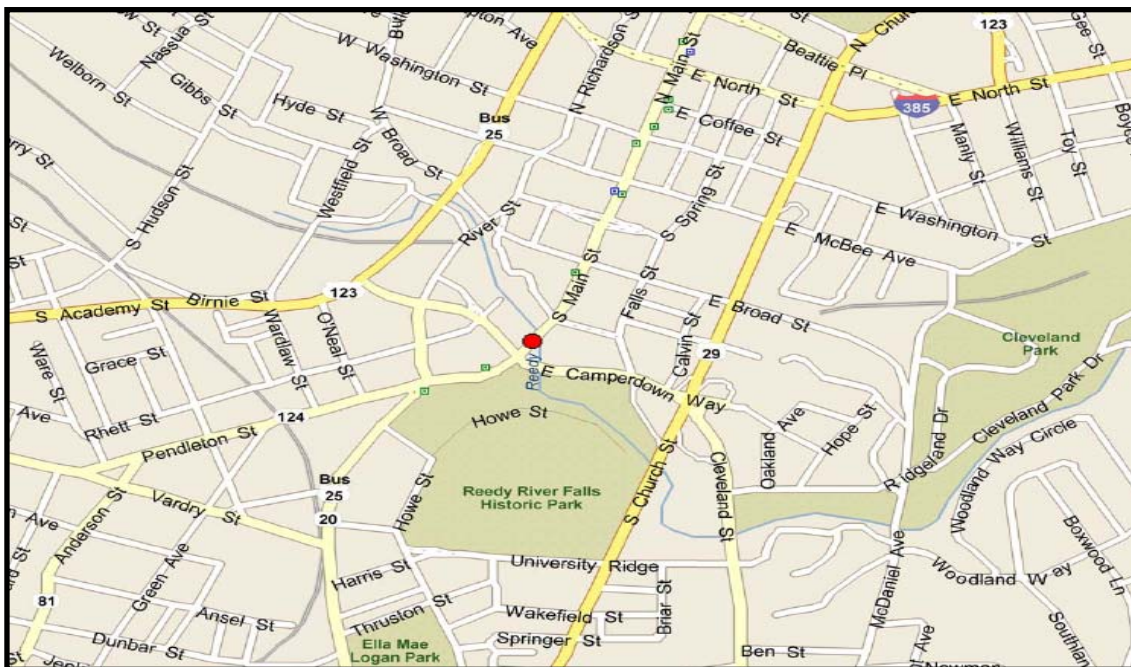
Riverplace 550 South Main St.



For more information and
inspection please contact:

MARCUS M. CORNELIUS
Senior Vice President
Direct (864) 370-8192
mcornelius@coppedgetison.com

TODD E. YOUNGHANS, SIOR
Executive Vice President
Direct (864) 370-8190
tyoungans@coppedgetison.com



No warranty or representation, express or implied, is made as to the accuracy of the information contained herein, and same is submitted subject to errors omissions, change of price, rental or other conditions, withdrawal without notice, and to any specific listing conditions, imposed by our principals.

 **COPPEDGE & TISON**
Commercial Real Estate

An independently owned and
operated member of the
 **CUSHMAN &
WAKEFIELD**
ALLIANCE